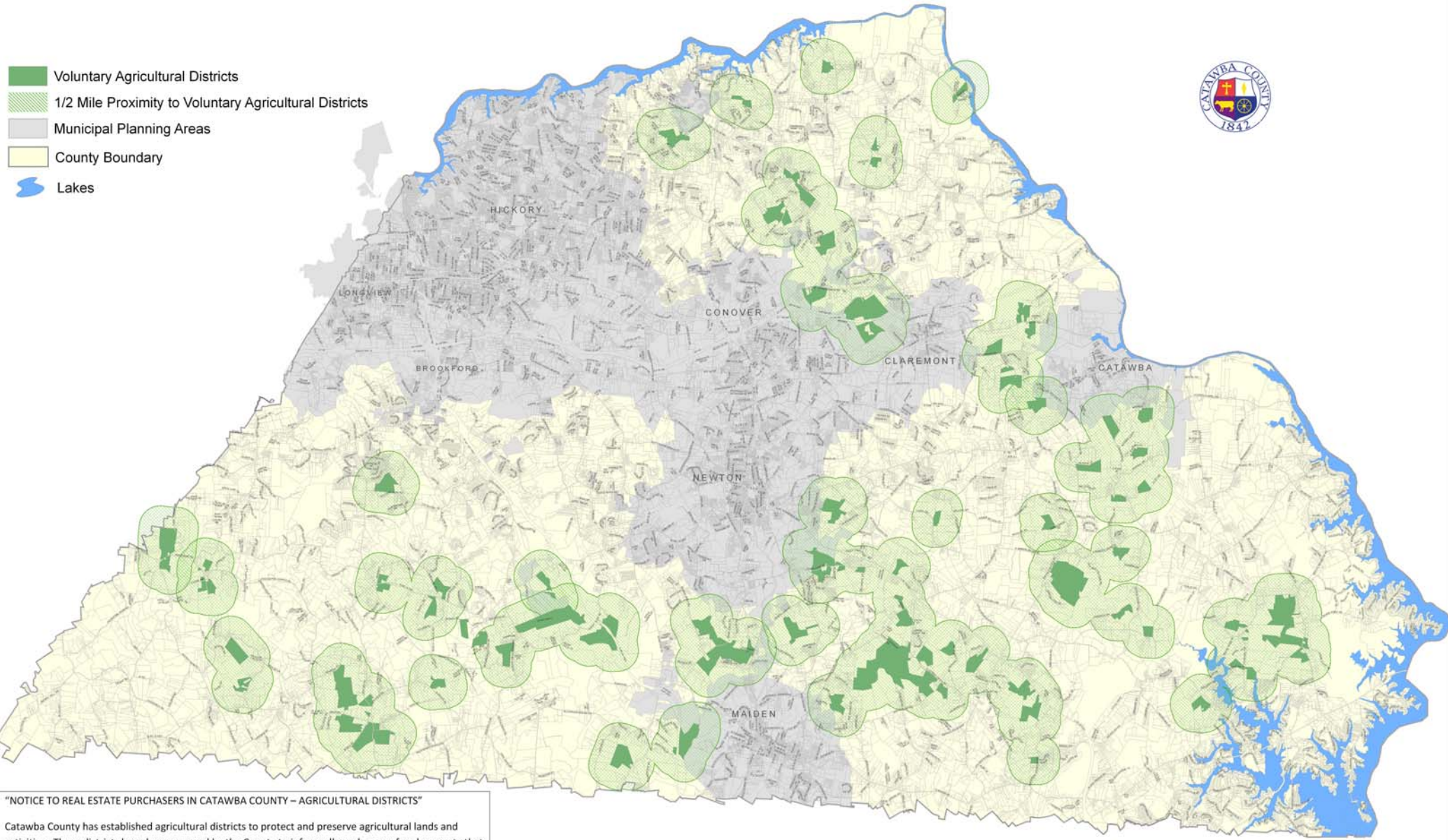


CATAWBA COUNTY

Voluntary Agricultural Districts



- Voluntary Agricultural Districts
- 1/2 Mile Proximity to Voluntary Agricultural Districts
- Municipal Planning Areas
- County Boundary
- Lakes



"NOTICE TO REAL ESTATE PURCHASERS IN CATAWBA COUNTY – AGRICULTURAL DISTRICTS"

Catawba County has established agricultural districts to protect and preserve agricultural lands and activities. These districts have been mapped by the County to inform all purchasers of real property that certain agricultural and forestry activities, including but not limited to pesticide spraying, manure spreading, machinery and truck operation, livestock operations, tree harvesting, sawing, and other common farming activities may occur in these districts any time during the day or night. Information on the location and establishment of these districts can be obtained from the North Carolina Cooperative Extension Service – Catawba County office, the office of the Register of Deeds, the County Tax office, the County Planning office, the County Soil & Water Conservation District or the Natural Resources Conservation Service office. For more information on the Voluntary Agricultural District program, you may contact Cooperative Extension at (828) 465-8240 or Planning, Parks & Development at (828) 465-8380.



Approved Voluntary Agricultural Districts as of December 31, 2010

This map product was prepared from the Catawba County, NC, Geographic Information System. Catawba County has made substantial efforts to ensure the accuracy of location and timing information contained on this map. Catawba County provides and warrants the substantial verification of any data contained on this map product to the user. The County of Catawba, its employees and agents, does not and shall not be held liable for any errors or omissions which may appear on this map from the map product to the user hereafter, any person or entity.

Map Document: E:\maph\maph\maph\Map_Agr_Dist_01.mxd Updated: 2/21/11